

## CPCPMS3034 Install and test medical gas pipeline systems

### COURSE OVERVIEW

The accurate and safe installation of medical gas pipeline systems is critical to patient safety and to prevent life threatening situations. This course is designed for existing registered and/or licensed plumbers and apprentices. It focuses on safe and compliant installation of medical gas systems.

**NOTE: The course is for medical gas installation NOT medical gas design**

### COURSE OUTCOMES

On successful completion of this course, participants will be able to:

- Check configuration of medical gas pipeline system for compliance with plans or specifications, standards and authorities' requirements.
- Display skills to measure, locate, set out and install medical gas pipelines and terminal units to AS 2896 – 2021 including brazing techniques.
- Theory of testing medical gas pipeline systems to comply with the job specification, regulatory authorities' requirements, standards and Codes of Practice, and details recorded in the format required.
- Apply safety and quality assurance requirements and demonstrate effective work methods relevant to medical gas pipeline installations

### When and Where?

PICAC Beenleigh Campus (South Brisbane, QLD).

PICAC Glenwood Campus (NSW).

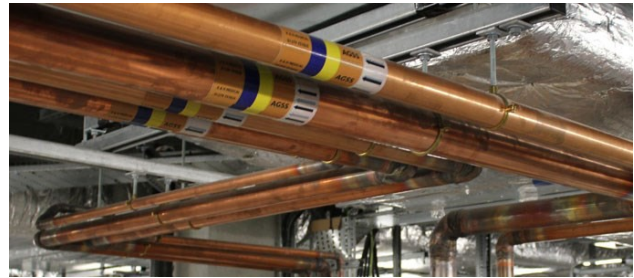
Three (3) days of onsite training.

---

**Pricing: \*\$1,995**

**Upon completion of the unit, you will receive your Statement of Attainment**

\*For QLD only— If eligible, Construction Skills Queensland (CSQ) Short Courses Building will fund \$909 and Apprentice Advance an extra 25% on top of base price. Funding will only be available if you enrol between 1 October 2021 to 30 September 2022.



### ENTRY REQUIREMENTS

Applicants should be registered or licensed plumbers or apprentices before applying.

The unit CPCPCM2043 Carry out WHS requirements is a prerequisite to the CPCPMS3034 Install and test medical gas pipeline systems, students will be enrolled in both units unless they can gain Credit Transfer.

The units are designed to provide training of individuals in: understanding the health issues; planning a safe installation; and testing and commissioning a medical pipeline systems.

To successfully install medical gas pipelines, installers must be able to fabricate non-ferrous metal pipelines (e.g. copper) and silver solder pipelines to a high standard. A practical refresher is conducted to ensure participant skills are current with industry best practice.

Students will learn the requirements to install pipelines by gaining a clear understanding of the Australian Standards 2896-2021. This learning is supported by practical fabrication activities and pipework installation exercises simulating real life examples.

### ASSESSMENT

Assessment for this course requires participants to:

- Actively participate in class discussions
- Answer questions in a written test/assessment
- Be observed in workshop/training facility practices
- Join in group classroom and workshop activities

### CONTACT US

Email: [info@tstca.com.au](mailto:info@tstca.com.au)

Phone: 1300 222 727

[www.theservicetradescollege.com.au](http://www.theservicetradescollege.com.au)

---

TERMS AND CONDITIONS APPLY

INDUSTRY OWNED—PREMIUM TRAINED